

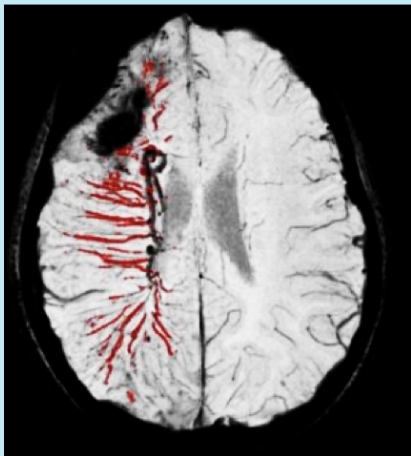
# NIH-FUNDED BRAIN IMAGING AND NEUROCOGNITIVE STUDY

looking for participants (SWS, PWS, healthy siblings)



**Wayne State University School of Medicine**  
**Children's Hospital of Michigan**  
Detroit

clinicaltrials.gov NCT04517565  
NIH/NINDS R01 NS041922



- **Non-invasive brain MRI with advanced sequences**
- **Neuro-psychology evaluation**
- **Neurology consultation**
- **Full study reports**
- **Travel cost reimbursement**

- **Eligibility:** - age >3 months-30 years  
- diagnosis of SWS and/or facial port wine birthmark  
- no metal around head (e.g., dental braces)  
- ability to stay in scanner for up to 30 min  
- healthy siblings are also eligible (optional)

- **Study contact:** Prof. Csaba Juhasz MD, PhD  
csaba.juhasz@wayne.edu

